

# Insertos de Mordazas

Argensinter standard

---

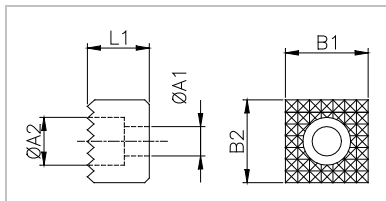


## Insertos de Mordaza

(de acuerdo al standard de Argensinter)

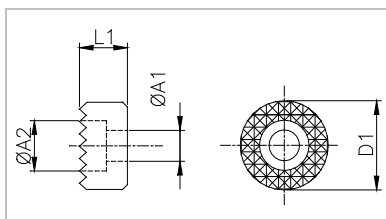
Pág. 2 de 4

### Tipo: C



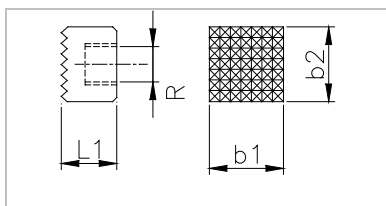
Código	B1	B2	L1	A1	A2
G C 6	15.87	15.87	12.7	5.2	8.2
G C 7	19.05	19.05	16	6.7	11

### Tipo: D



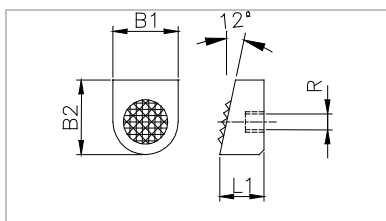
Código	D1	L1	A1	A2
G D 4	15.87	12.7	5.2	8.2
G D 6	19.05	16	6.7	11

### Tipo: K



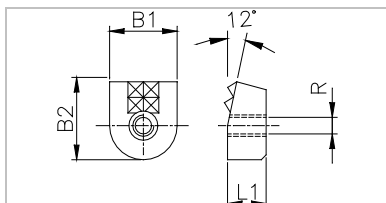
Código	B1	B2	L1	R
G K 4	12.7	12.7	9.5	M6
G K 5	15.87	15.87	9.5	M6
G K 6	19.05	19.05	12.7	M6
G K 7	19.05	19.05	9.5	M6
G K 8	12.7	44.50	9.0	M6

### Tipo: L



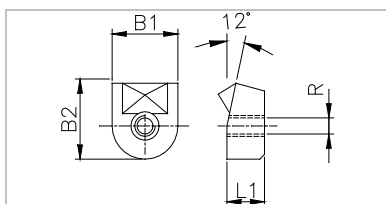
Código	B1	B2	L1	R
G L 4	14.5	16	8	10-32 UNF
G L 5	19	22.5	13.5	10-32 UNF

### Tipo: M



Código	B1	B2	L1	R
G M 4	14	16.5	8	10-32 UNF

### Tipo: N

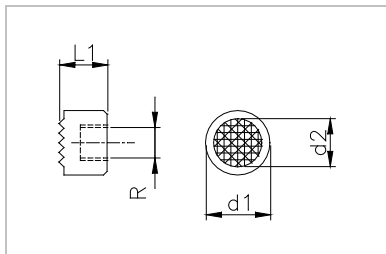


Código	B1	B2	L1	R
G N 4	14	16.5	8	10-32 UNF

## Insertos de Mordaza

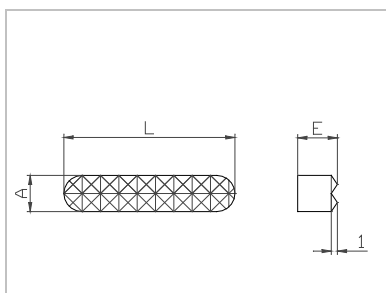
(de acuerdo al standard de Argensinter)

### Tipo: R



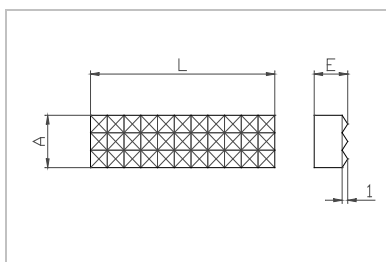
Código	D1	L1	R
<b>G R 3</b>	<b>11.9</b>	<b>9.5</b>	<b>10-32 UNF</b>
<b>G R 4</b>	<b>12.6</b>	<b>9.5</b>	<b>10-32 UNF</b>
<b>G R 5</b>	<b>12.6</b>	<b>12.7</b>	<b>10-32 UNF</b>
<b>G R 6</b>	<b>15.5</b>	<b>9.5</b>	<b>M6</b>
<b>G R 7</b>	<b>15.87</b>	<b>9.5</b>	<b>M6</b>
<b>G R 8</b>	<b>19.05</b>	<b>9.5</b>	<b>M6</b>
<b>G R 9</b>	<b>19.95</b>	<b>10</b>	<b>M6</b>

### Tipo: V



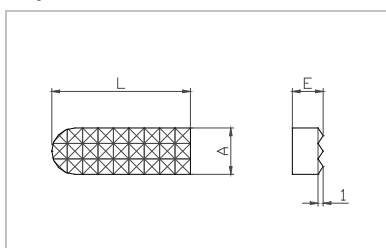
Código	L	A	E
<b>G V 2 8</b>	<b>28</b>	<b>6</b>	<b>6.5</b>

### Tipo: U



Código	L	A	E
<b>G U 2 2</b>	<b>22</b>	<b>9</b>	<b>6.5</b>
<b>G U 3 3</b>	<b>33</b>	<b>9</b>	<b>6</b>

### Tipo: T



Código	L	A	E
<b>G T 2 9</b>	<b>29</b>	<b>9</b>	<b>6.5</b>

Argensinter S.R.L. – Metal Duro y Herramientas Especiales  
Tacuarí 925 (B1704FJM) Ramos Mejía.  
Provincia de Buenos Aires, Argentina  
Tel.: (+54) 11 4658 7637 – Fax: (+54) 11 4656 8028  
email: [ventas@argensinter.com.ar](mailto:ventas@argensinter.com.ar) - Web site: <http://www.argensinter.com.ar>