

Placas para Soldar

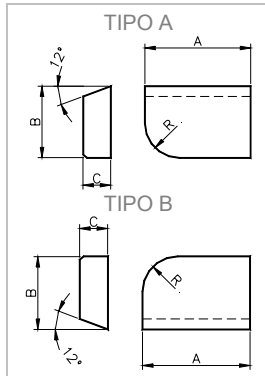
Según Norma ISO
Argensinter standard



Placas para Soldar según Normas ISO (de acuerdo al standard de Argensinter)

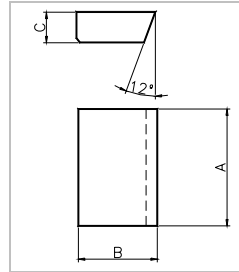
Hoja 2 de 5

Tipo: A o B



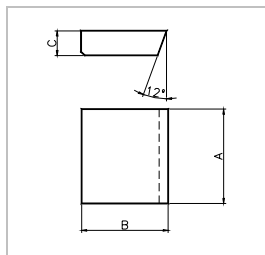
Código	A	B	C	R
A-B6	6	4	2	2
A-B82	8	5	2	3
A-B8	8	5	3	3
A-B102	10	6	2.5	3
A-B10	10	6	4	3
A-B123	12	8	3	4
A-B12	12	8	4	4
A-B164	16	10	4	5
A-B16	16	10	5	5
A-B205	20	12	5	8
A-B20	20	12	6	8
A-B257	25	14	7	8
A-B25	25	16	8	8
A-B328	32	16	8	10
A-B32	32	20	10	10
A-B4010	40	18	10	10
A-B40	40	25	12	10
A-B5012	50	20	12	12
A-B50	50	32	16	12

Tipo: C



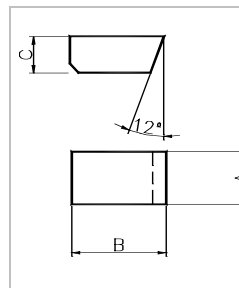
Código	A	B	R
C6	6	4	2
C82	8	5	2
C8	8	5	3
C102	10	6	2.5
C10	10	6	4
C123	12	8	3
C12	12	8	4
C164	16	10	4
C16	16	10	5
C205	20	12	5
C20	20	12	6
C257	25	14	7
C25	25	16	8
C328	32	16	8
C32	32	20	10
C4010	40	18	10
C40	40	25	12
C5012	50	20	12
C50	50	32	16

Tipo: CB



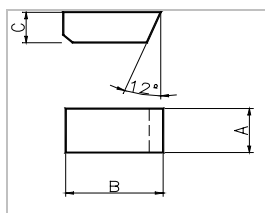
Código	A	B	C
CB6	6	6	2
CB10	10	10	4
CB12	12	12	4
CB14	14	14	5
CB15	15	15	5
CB16	16	15	6
CB18	18	18	6
CB207	20	18	7
CB208	20	18	8
CB22	22	20	7
CB25	25	20	8
CB28	28	20	8
CB30	30	20	8.5

Tipo: D



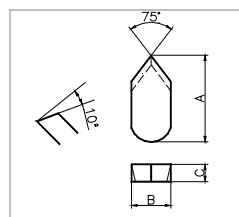
Código	A	B	C
D37	3	7	2
D3	3	7	3
D4	4	6	3
D48	4	8	3
D5	5	8	4
D510	5	10	4
D6	6	10	5
D612	6	12	5
D8	8	12	6
D814	8	14	6
D10	10	16	8
D12	12	20	10
D16	16	25	12

Tipo: DL



Código	A	B	C
DL3	3	10	3
DL4	4	12	4
DL5	5	15	5
DL6	6	16	5
DL7	7	18	6
DL8	8	20	7
DL9	9	20	7
DL10	10	20	7
DL12	12	22	8

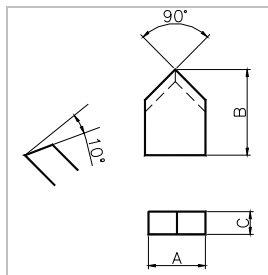
Tipo: E



Código	A	B	C
E8	8	4	3
E10	10	5	3
E122	12	4	2
E12	12	6	3
E14	14	5	2.5
E163	16	6	3
E16	16	8	4
E18	18	8	4
E20	20	10	5
E25	25	12	6
E32	32	16	8

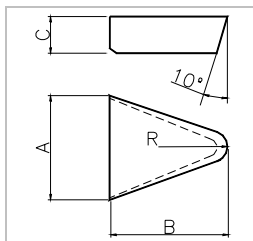
Placas para Soldar según Normas ISO (de acuerdo al standard de Argensinter)

Tipo: F



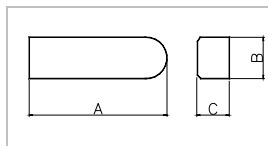
Código	A	B	C
F8	8	9	1.5
F103	10	12	3
F10	10	12	4
F12	12	15	4
F164	16	18	4
F16	16	18	5
F205	20	20	5
F20	20	20	7
F25	25	25	8
F32	32	30	9
F40	40	35	10
F50	50	40	10
F60	60	45	10
F63	63	45	10

Tipo: G



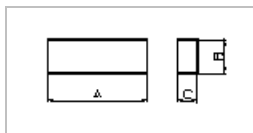
Código	A	B	C	R
G82	8	12	2.5	1
G8	8	12	4	1
G103	10	14	3	1.5
G10	10	14	4	1.5
G124	12	17	4	2.5
G12	12	17	5	2.5
G164	16	20	4	3.5
G165	16	20	5	3.5
G16	16	20	6	3.5
G20	20	24	6	4.5
G25	25	28	8	6
G30	30	34	10	8

Tipo: M



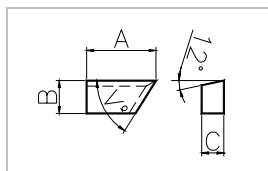
Código	A	B	C
M20	20	6	4
M25	25	6	5
M30	30	8	6
M32	32	8	6

Tipo: O



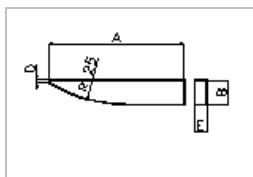
Código	A	B	C
O152	15	5	2
O202	20	6	2
O253	25	6	3
O254	25	7	4

Tipo: PA



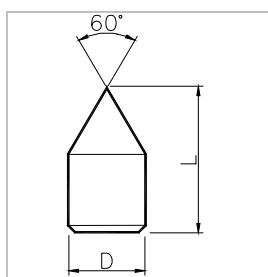
Código	A	B	C
PA2514	25	14	10
PB2514	25	14	10
PA2512	25	12	8
PB2512	25	12	8

Tipo: R



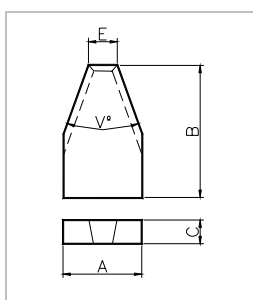
Código	A	B	C	R
R12	12	2	0.8	0.8
R16	16	2.5	1.2	1
R19	19	3	1.4	1
R22	22	3.5	1.8	1.4
R25	25	4	2.2	1.4
R30	30	5	2.8	1.4

Tipo: Z



Código	A	B
Z5	5	12
Z6	6	12
Z7	7	14
Z8	8	16
Z11	11	20
Z12	12	22
Z14	14	22
Z16	16	28
Z18	18	30

Tipo: X

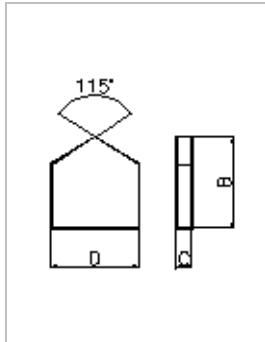


Código	A	B	C	E
X16	16	25	6	5
X168	16	25	8	5
X19	19	28	6.5	7
X198	19	28	8	7
X25	25	35	7	10
X258	25	35	8	10
X38	38	45	8	15
X389	38	45	9.5	15
X44	44	50	9.5	17

Placas para Soldar según Normas ISO (de acuerdo al standard de Argensinter)

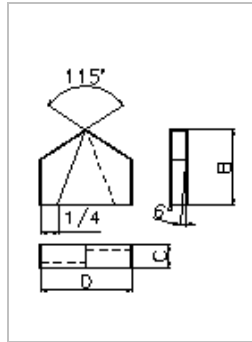
Hoja 4 de 5

Tipo: W



Código	D	B	C
W2	2.5	3.5	0.6
W3	3.5	4.5	0.8
W4	4.5	5	1
W5	5.5	6	1.3
W6	6.5	7	1.5
W7	7.5	8	1.8
W8	8.5	8	1.8
W9	9.5	9	2
W10	10.5	9	2
W11	11.8	11	2.5
W12	12.8	11	2.5
W13	13.8	12	2.8
W14	14.8	12	2.8
W15	15.8	14	3
W16	17	14	3
W17	18	16	3.5
W18	19	16	3.5
W19	20	18	4
W20	21	18	4
W21	22	18	4
W22	23	18	4
W23	24	20	4.5
W24	25	20	4.5
W25	26	20	4.5

Tipo: W



Código	D	B	C
W26	27.5	20	4.5
W27	28.5	22	5
W28	29.5	22	5
W29	30.5	22	5
W30	31.5	22	5
W31	32.5	24	5.5
W32	33.5	24	5.5
W33	34.5	24	5.5
W34	35.5	24	5.5
W35	36.5	25	6
W36	37.5	25	6
W37	38.5	25	6
W38	39.5	25	6
W39	40.5	26	7
W40	41.5	26	7
W41	42.5	26	7
W42	43.5	26	7
W43	44.5	28	8
W44	45.5	28	8
W45	46.5	28	8
W46	47.5	28	8
W47	48.5	29	9
W48	49.5	29	9
W49	50.5	29	9
W50	51.5	29	9

Por favor, para mayor información contactéese con nosotros o visítenos en www.argensinter.com.ar

Argensinter S.R.L. – Metal Duro y Herramientas Especiales
Tacuarí 925 (B1704FJM) Ramos Mejía.
Provincia de Buenos Aires, Argentina
Tel.: (+54) 11 4658 7637 – Fax: (+54) 11 4656 8028
email: ventas@argensinter.com.ar - Web site: <http://www.argensinter.com.ar>